

# 1609 Ridge Road

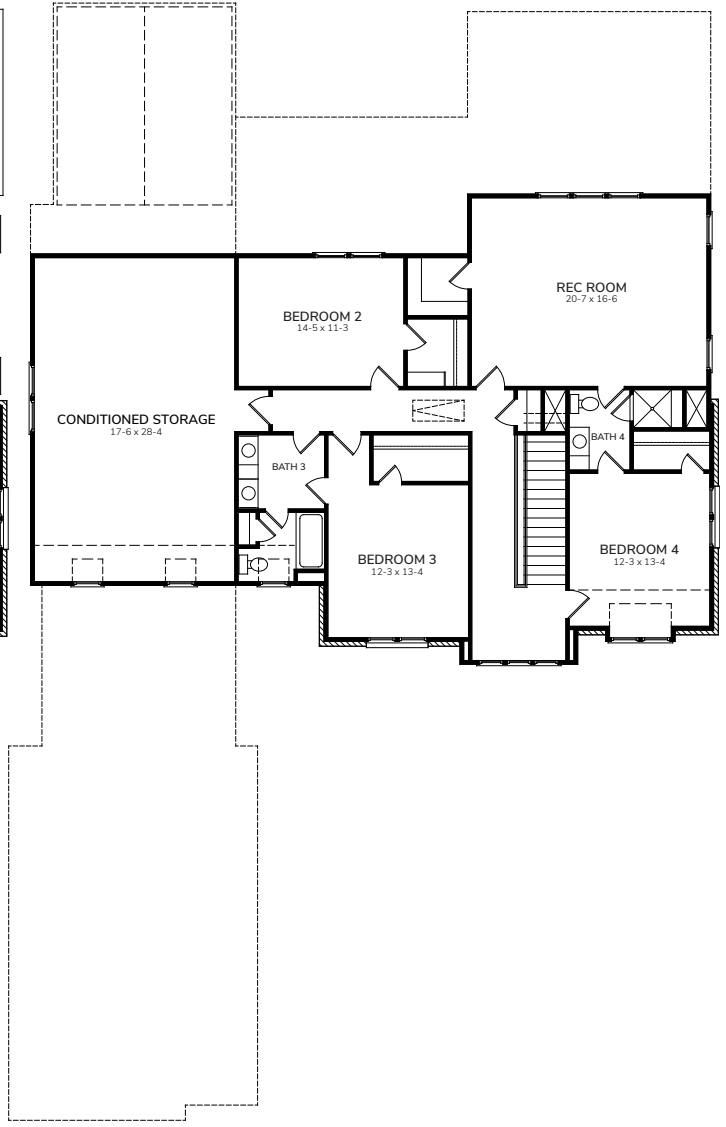


Bedrooms	5
Bathrooms	4.5
1st Floor Main	2524 sq. ft.
2nd Floor Main	1502 sq. ft.
2nd Floor Conditioned Storage	532 sq. ft.
Total Heated	4558 sq. ft.

# 1609 Ridge Road



First Floor



Second Floor

