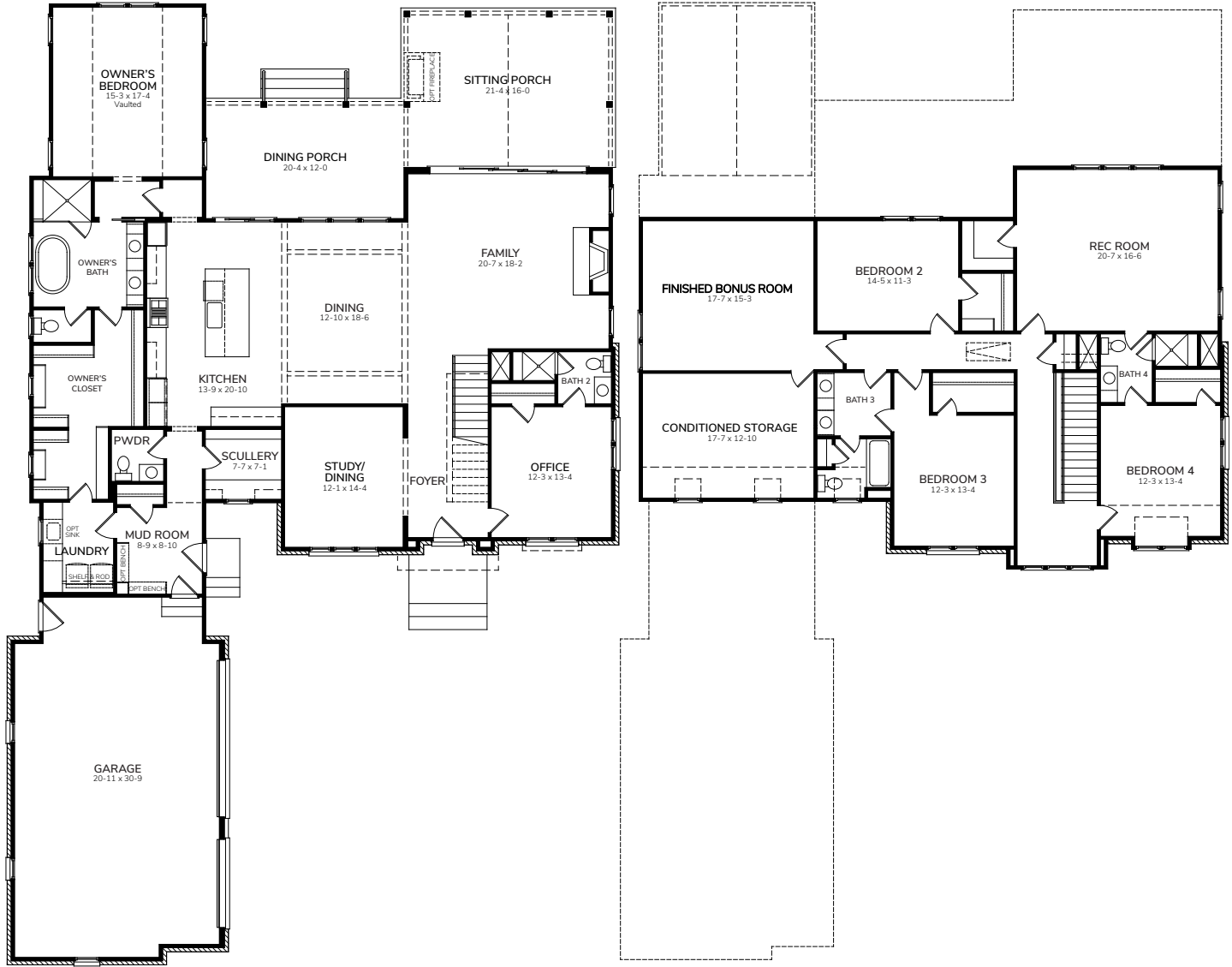


1609 Ridge Road



Bedrooms	4
Bathrooms	4.5
1st Floor Main	2524 sq. ft.
2nd Floor Main	1502 sq. ft.
2nd Floor Finished Bonus Room	290 sq. ft.
2nd Floor Conditioned Storage	242 sq. ft.
Total Heated	4558 sq. ft.

1609 Ridge Road



First Floor

Second Floor

